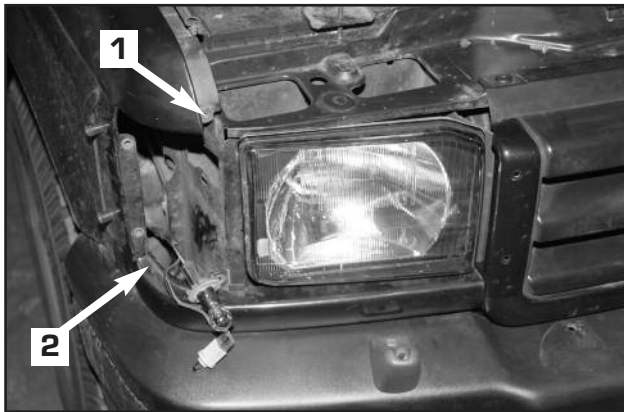


Discovery 2 - up to 2002 (Square Headlight) Radiator Muff

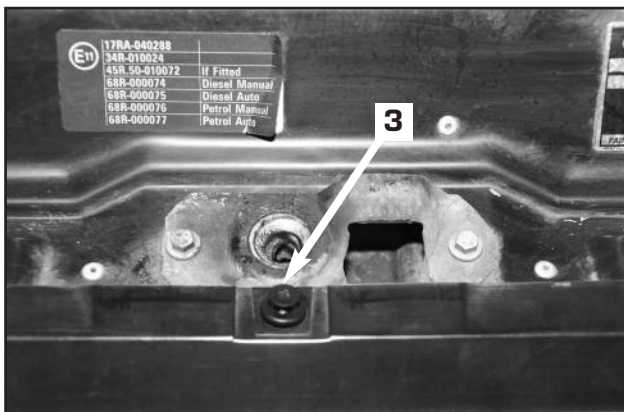
1. Remove the screw that holds the indicator in place and remove both the indicators by pulling out forwards and disconnect the bulbs. (1 on photo below)

2. Remove the headlight on one side only. To do this there are two twist locks behind the headlight at the top pull the little tab out and rotate the lock into the slot on both off them, pull the top of the headlight forward slightly then pop out the bottom ball joint. Unplug the lightbulbs and place the headlight to one side

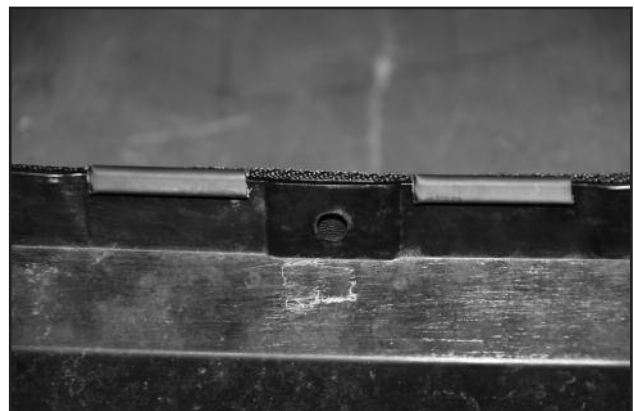


3. The panel below the headlight needs to be removed both sides. There is a screw here (2 on photo above) which is accessible from through the wheel arch with a screwdriver, remove this then lift the end up slightly and pull out to the side of the vehicle.

4. Remove the three screws and clips on the top of the grill (3 on photo below) remove the two screws either side of the grill at the bottom (4 on photo top right) then lift the grill slightly and remove forwards away from the vehicle.



5. The four clips off the radiator muff go to the top. Hook over the four clips first from the centre out then the three bottom clips and the two sides clips last. Close the cover and do up the poppers. (Photo below) Then refit the grill in reversal of removal instructions and check your lights are working once you have finished.



Important

This radiator muff is designed to help the engine warm up quicker during cold weather conditions, once the engine has reached operating temperature the cover must be opened to allow the cooling system to work properly and prevent overheating.