

# Electric Winch

**BRITPART®**  
**PULLING POWER**

## Installation & Operation Manual

**DB2000**



CE

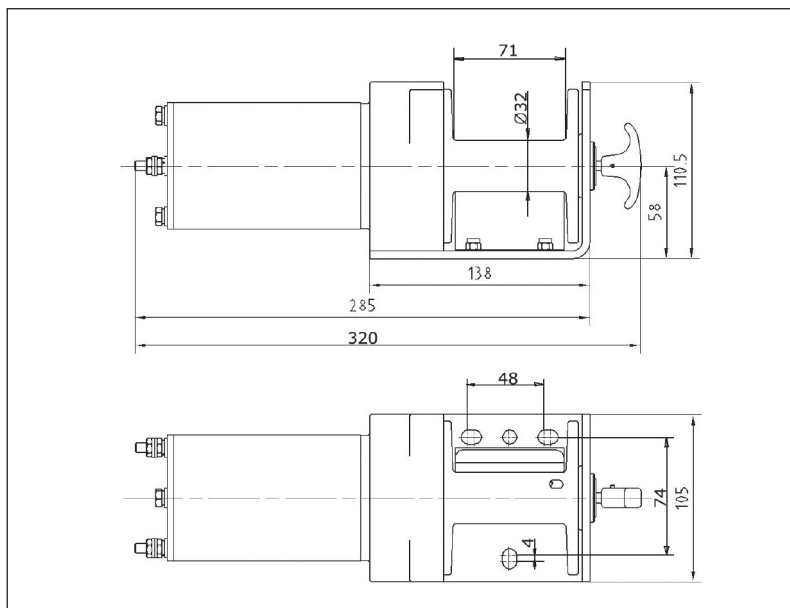
Vr. 1

**BRITPART**

## DB2000

### Features

- Planetary gear system for fast line speed
- Free spooling
- Power in and power out
- 1.0Kw (1.5Hp) heavy duty electric permanent magnetic motor
- Low electric current



### Specifications

- |   |                     |                     |
|---|---------------------|---------------------|
| • Rated Line Pull - single line                 | 907kgs              | 2,000lbs            |
| • Gear Reduction Ratio                          | 153:1               |                     |
| • Motor - permanent magnet - 12 volt DC         | 1.0Kw - 12 volt DC  | 1.5Hp               |
| • Drum Size (D x L)                             | 32 x 71mm           | 1.26 x 2.8"         |
| • Cable supplied - minimum break force 4,000lbs | 4mm x 15.2m         | 5/32" x 50'         |
| • Overall Dimension (L x W x H)                 | 320 x 105 x 110.5mm | 12.6 x 4.13 x 4.35" |
| • Net Weight                                    | 6.6kgs              | 14.6lbs             |
| • Mounting Bolt Pattern                         | 48 x 76mm           | 1.89 x 3"           |

### Performance of 1st Layer

Line Pull		Line Speed		Motor Current
Lbs	Kgs	Fpm	Mpm	Amp
0	0	14.0	4.3	14
1,000	454	9.0	2.7	60
1,500	680	7.5	2.3	90
2,000	907	5.9	1.8	115

### Line Pull & Cable Capacity by Layer

Cable Layer	Rated Line Pull		Cable Capacity	
	Lbs	Kgs	Feet	Meters
1	2,000	907	6	1.8
2	1,636	742	13	4.0
3	1,385	628	22	6.7
4	1,200	544	33	10.0
5	1,059	480	44	13.4
6	947	430	50	15.2



Wire hazard! Stay clear of wire rope when winch is in operation!



Place tree protect sling low on the tree!



Never connect the wire rope to itself!



Keep hand and fingers clear of wire rope and hook when operating the winch!



Never try to use yourself or anyone else as a secure place to hook a winch too!



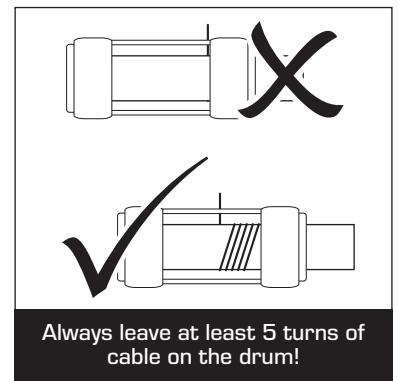
Frequently inspect the wire rope and all other winch equipment!



Never consume alcohol when operating the winch!



Always wear protection on your hands!



Always leave at least 5 turns of cable on the drum!

**When operating this winch, safety precautions should always be followed to reduce the risk of personal injury and damage to the winch.**

### • Learn How To Use Your Winch

After the winch has been installed, take some time to practice using the winch so that you are familiar with its operation. Periodically check the winch installation to ensure all nuts and bolts are tight. To ensure proper operation, carefully inspect for any damaged parts before operating the winch. Any damaged part should be repaired or replaced.

### • Keep Winching Area Clear

Do not allow people to remain in the area during winching operations. Do not step over a taut wire rope or allow anyone else to do so. Due to the possibility of a wire rope breaking, direct all persons to stand clear of any possible pathways. A snapped wire rope could cause winch failure, injury or death. Keep proper footing and balance at all times. Do not reach over or across the winch and/or wire rope or come between the winch and load whilst the winch is in operation.

### • Inspect Wire Rope & Equipment Frequently

The wire rope should be inspected for damage that can reduce its breaking strength. A frayed rope with broken strands should be replaced immediately. Never use a wire rope that shows signs of weakening is knotted or kinked. Always replace the rope with one of the correct rating for the winch. Examine the winch before using as components may be affected by exposure to everyday weathering, chemicals, salts and rusts etc.

### • Working Area Conditions

Keep the working area well lit. Do not use the winch in the presence of flammable gasses or liquids.

### • Keep Children Away

Keep children away from the working area and never let children operate the winch.

## •Wear Gloves

When handling or rewinding the wire rope, always use hand protection to eliminate the possibility of cuts caused by burrs and slivers from broken strands.

## •Secure Vehicle

Be sure to secure vehicle in position before using the winch and after moving an item with the winch secure the item. Do not rely on the winch to hold it for an extended period as the winch does not have a locking mechanism. Apply blocks (such as a wheel choke) to vehicle when parked on an incline.

## •Drum Rope

Do not apply load to winch when the wire rope is fully extended. Always make sure that there are at least 5 complete turns of rope left on the drum before starting to winch. Take care to ensure the wire rope is re-spooled correctly.

## •Keep Hands & Fingers Clear Of Wire Rope & Hook When Operating Winch

Never put your finger through the hook when reeling in the last few feet. If your finger gets trapped in the hook or rope you could lose it. Never guide the wire rope under tension onto the drum with your hand. Always keep hands and body away from the fairlead (cable intake slot) when operating the winch.

## •Never Hook The Wire Rope Back Onto Itself

Hooking the rope back onto itself creates an unacceptable strain, breaking individual strands, which in turn weakens the entire wire rope.

## •Keep Pulling Durations As Short As Possible

The winch is designed for intermittent use and cannot be used in constant duty applications. Do not pull for more than one minute at or near the rated load. If the motor becomes too hot to touch, stop and let it cool off for a few minutes. If the motor stalls then cut off the power immediately.

## •Do Not Overload

Always use the winch at its rated capacity for your safety and better performance of the winch. Do not use inappropriate attachments in an attempt to exceed its rated capacity.

## •Avoid Continuous Pulls From Extreme Angles

This will cause the rope to pile up at one end of the drum. When feasible, get the rope as straight as possible to the direction of the object.

## •Never Operate The Winch Without The Rope Fairlead Fitted

Operator injury or winch damage can result if a fairlead is not installed.

## •Stay Alert

Watch what you are doing at all times. Use your common sense. Do not use this winch when you are tired, stressed or when under the influence of drugs, alcohol or medication.

## •Disconnect Switch

Unplug the switch when not in use.

## •Stay Alert

When servicing, use only identical replacement parts. Use of any other parts will void the warranty.

## •Never Move The Vehicle With Wire Rope Extended

Do not move the vehicle with the wire rope extended and attached to the load to pull it as the wire rope could snap.

## •Check Winch Is Secure

Be certain that winch is properly bolted to a structure or vehicle that can hold the winch load.

## •Use The Right Couplings

Always use the proper couplings when connecting the winch cable to the load.

## •Use Horizontally

Never lift items vertically as the winch was designed for horizontal use only. Never lift people or hoist loads over people.

## •Inappropriate Attachments

Do not use any inappropriate attachments to extend the length of the winch cable.

## •Moving A Boat Onto A Trailer

When loading a boat into a trailer without reel or side hull rollers, make sure the trailer is submerged in the water when the boat is loaded by the winch. Attempting to drag the boat onto the trailer while on land can cause winch failure and possible injury.

## •...And Finally

The warnings, cautions and instructions in this manual cannot cover all the possible conditions and situations that may occur. It must be understood, by the operator, that common sense and cautions are factors that cannot be built into this product but must be exercised by the operator.

## Installation

When installing a winch, your instructions may vary from the manual diagrams and instructions included here due to vehicle and mounting options in the structure. Always disconnect the battery from the vehicle to remove the electric hazard.

**Caution** - If you choose not to use an ATV mounting kit, you may be required to drill holes in a structural support on the ATV. Be sure the location is strong enough to support the rated pulling force of the winch. Do not drill into wiring or the petrol tank. If the mounting bolts needed are a different length than supplied use a bolt of equal or better quality to that supplied by the manufacture. Torque the kits 5/16" Grade 5 mounting bolts to 12ft/lbs (1.7kg/m).

### Step One

Line up the winch on the vehicle mounting frame (not included). Make drill markings throughout the mounting holes. It should be aligned and secured to a solid, flat part of the vehicle (capable of supporting the winch and load capacity) where the full rated load will be evenly distributed. Also please remember that the winch is designed for horizontal not vertical pull.

### Step Two

Before drilling the (3) 5/16" holes through the vehicle mounting frame, remove the winch. Drill the holes at this time. Secure the winch to the vehicle mounting frame with the correct hardware. Tighten securely at this time.

### Step Three

Remove the outer connection nuts from the winch motor and connect the red cable which is (+) to the red terminal. Tighten securely at this time. Now connect the black cable which is (-) to the black terminal. Tighten securely at this time.

**Caution** - Property damage or serious injury may occur if this winch is mounted or wired incorrectly. Therefore, installation should be done by a qualified technician.

### Step Four

Put the red and black remote control-to-battery cable from the switch on the cable of the remote control, to the 12 volt battery fuse box terminal strip on the vehicle. The circuit fuse must be 70 amps and the circuit must be 12 volt.

**Caution** - Remote control battery cables should not be drawn taut. Leave slack for some cable flexibility. Do not put cables near moving engine parts or heated areas that could melt the cable.

### Step Five

Disconnect the positive (red) cable to the vehicle battery. You will now be making an electrical connection from the remote control-to-battery cables to the vehicle electrical system (the vehicles fuse box terminal strip).

**Caution** - Even though the 12 volt battery cannot shock you it may spark and heat up to the melting point. It may cause serious burns if not installed and fused correctly. Due to these factors it is imperative to have the battery disconnected at this time.

### Step Six

Find an appropriate positive (red) fused terminal point in the vehicle fuse box able to supply 70 amps of current and connect the red remote control-to battery cable directly to the fuse terminal (without cutting wires). Connect the negative (black) cable to the vehicle metal frame or ground lug on or near the battery. Re-connect the positive (red) battery cable to the battery. Unfasten the clutch by pulling out, then turn the clutch knob to lock it in the OUT position.

### Step Seven

Pull the cable 5 feet out for testing purposes. Test utility winch for proper operation. Refer to the operation instruction section.

# BRITPART

The quality parts for Land Rovers

## EC Declaration of Conformity

**Border Holdings (UK) Ltd**  
Britpart, The Grove,  
Craven Arms, Shropshire,  
SY7 8DB, UK

**Part Numbers -**  
**DB12000i, DB9500i, DB8000 & DB2000**

**Description -**  
**Electric Winches**

We hereby declare that above mentioned winches are compliant with the essential requirement of Directive 98/37/EC(MD) and satisfy the standards of BS EN60204-32 in their application of pulling a load.



## Operation

**Caution** - The vehicle battery must be fully charged and the engine running before using the winch.

### Step One

The clutch should be in the OUT position, from Step 6 in the installation instructions.

### Step Two

Grasp the hook with the manual handle and pull out the cable to the desired length then attach the hook to the item being pulled. At this time, confirm the hook spring-loaded latch is set.

**Caution** - Always leave at least 5 turns of cable on the drum. Read over winch safety warning and precautions before continuing.

### Step Three

To pull another object, re-engage the clutch by turning the clutch knob until it is secure in the IN position.

**Caution** - To avoid damaging the vehicle transmission, do not have the transmission in park or any gear. Make sure to set the emergency brake and place wheel chocks, then put in neutral.

### Step Four

While standing along the tow path, press and hold the IN push button on the remote control to pull the load. If the load will not move, release pull switch and confirm that obstacles are not blocking the load or if the load is too heavy. Now press and hold the OUT push button to release the load. Before reversing directions, make sure motor stops.

### Step Five

You will need to secure the load so it cannot move in either direction after all pulling is complete.

**Caution** - This utility winch is designed for intermittent use only and should not be used in a constant duty application. The duration of the winching job should be kept as short as possible. If the winch motor becomes too hot, stop the winch and let it cool off. Never pull for more than one minute at or near rated load. Do not maintain power to the winch if the motor stalls as it can damage the winch.

## Lubrication

No internal lubrication is required as all moving parts inside the winch have been lubricated using high temperature lithium grease at the factory. Lubricate cable every so often using a light penetrating oil.

## Cable Assembly Replacement

To be performed only by a qualified technician. Move the clutch handle to the OUT position. Extend cable assembly to the full length. Notice how the existing cable is connected to the inside of the drum. Remove the old cable assembly and secure the new one. Retract cable onto cable drum being careful not to allow for kinking.

**Caution** - Always replace with the approved replacement part. Never replace with inferior parts.

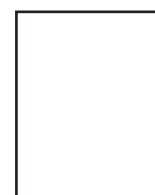
## General

Keep vehicle battery in good condition. Make sure the winch battery cable are not drawn taut against any surfaces which could possibly damage them.

Corrosion will reduce performance or may cause a short. Remove and clean the cable connections to the battery fuse box and chassis ground periodically. Cover cables and winch when not in use.

Symptom	Possible Cause	Suggested Remedy
<b>Motor does not turn on</b>	Switch assy not connected properly	Insert switch assy firmly to the connector
	Loose battery cable connection	Tighten the nuts on the cable connectors
	Solenoid malfunctioning	Tap solenoid to free contact, applying 12 volts to coil terminal directly. The solenoid will make an audible clicking when activating.
	Defective switch assy	Replace switch assy
	Defective motor	Check for voltage at armature port with switch pressed. If voltage is present then replace motor.
	Water has entered motor	Drain and dry. Run in short bursts without load until completely dry.
<b>Motor runs too hot</b>	Long period of operation	Let winch cool down periodically
<b>Motor runs slowly or without normal power</b>	Battery runs down	Recharge battery by running vehicle engine
	Insufficient current or voltage	Clean, tighten or replace the connector
<b>Motor runs but cable drum does not turn</b>	Clutch (cam ring) not engaged	Push cam ring into IN position. If that does not work, ask a qualified technician to check and repair
<b>Motor runs in one direction only</b>	Defective or stuck solenoid	Tap solenoid to free contacts. Repair or replace solenoid.
	Defective switch assy	Replace switch assy

**Britpart**  
 Border Holdings (UK) Ltd  
 The Grove  
 Craven Arms  
 Shropshire  
 SY7 8DB  
 United Kingdom



# Britpart Limited 1-Year Warranty



Britpart offers a limited one year warranty, to the original retailer purchaser, for each new Britpart electric winch against manufacturing defects in workmanship and materials on all mechanical and electrical components.

New cable assemblies are warranted against defects in workmanship and materials when received by the retail purchaser. There is no applicable warranty after initial use.

Warranty registration cards for each winch must be submitted at the time of purchase or within 30 days by the end user. Warranty will only be valid for the original purchaser of the winch and installed on the vehicle for which it was originally registered.

Britpart electric winches are intended for recreational self recovery usage. The warranty is void if the winch is used in commercial/industrial applications.

The obligation under this warranty, statutory or otherwise, is limited to the replacement or repair at the manufacturers factory or at a point designated by the manufacturer, of such part(s) as shall appear to the manufacturer, upon inspection of such part(s), to have been defective in material or workmanship. This warranty does not obligate Britpart to bear the cost of labour or transportation charges in connection with the replacement or repair of defective part(s), nor shall it apply to a product upon which repairs or alterations have been made, unless authorised by the manufacturer, or for equipment misused, neglected or improperly installed.

## Important Notice

To the fullest extent permitted by applicable law, the following are hereby excluded and disclaimed:

- 1 - All warranties of fitness for a particular purpose
- 2 - All warranties of merchantability
- 3 - All claims for consequential or incidental damages

**There are no warranties that extend beyond the description that appears on the face hereof.**

To the extent such warranties of fitness or merchantability are deemed to apply to this product, they exist for only so long as the express limited warranty elsewhere set forth is in existence.

Britpart reserves the right to change, alter or improve its products in design, materials or appearance without incurring any obligation to incorporate such changes in products that were previously manufactured.

To submit a warranty claim contact your Britpart distributor.

## WARRANTY CARD

name: \_\_\_\_\_

who installed your winch: \_\_\_\_\_

address: \_\_\_\_\_  
\_\_\_\_\_  
\_\_\_\_\_

what vehicle is the winch installed onto - \_\_\_\_\_

make: \_\_\_\_\_

postcode: \_\_\_\_\_

model: \_\_\_\_\_

telephone number: \_\_\_\_\_

year: \_\_\_\_\_

Britpart model number: \_\_\_\_\_

return completed form to:

serial number: \_\_\_\_\_

### Britpart

gi number: \_\_\_\_\_

Border Holdings (UK) Ltd

Tel: +44 (0) 1588 672711

invoice number: \_\_\_\_\_

The Grove

Fax: +44 (0) 1588 672660

date of invoice: \_\_\_\_\_

Craven Arms

Shropshire

Email: sales@britpart.co.uk

SY7 8DB

where did you purchase winch: \_\_\_\_\_

United Kingdom

www.britpart.co.uk

# BRITPART